

# **INDOFINE Chemical Company, Inc.**

121 Stryker Lane, Bldg. 30, Suite 1 • Hillsborough, NJ 08844 • U.S.A.

Phone: (908) 359-6778 • FAX: (908) 359-1179

website: [www.indofinechemical.com](http://www.indofinechemical.com)

e-mail: [chemical@indofinechemical.com](mailto:chemical@indofinechemical.com)

## CERTIFICATE OF ANALYSIS

Cat No.: D-431

Product: **7,4'-DIMETHOXYFLAVONE**

Cas Number: [20979-50-4]

Lot Number: 1101113

Chemical Formula: C<sub>17</sub>H<sub>14</sub>O<sub>4</sub>

Molecular Weight: 282.30

Melting Point: 152-154°C

Appearance: White crystalline powder

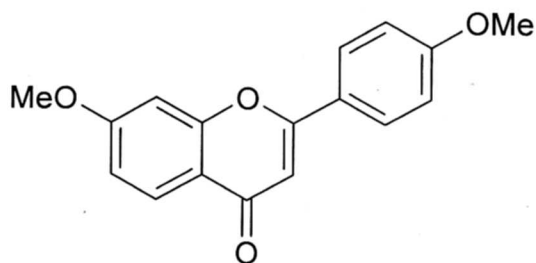
TLC: Benzene:Acetone (9:1)

Solubility: Soluble in Methanol

Moisture (KF): 0.22%

Storage: Cool dry place

Assay (HPLC): 99.78%





# INDOFINE Chemical Company, Inc.

121 Stryker Lane, Bldg. 30, Suite 1 • Hillsborough, NJ 08844 • U.S.A.

Phone: (908) 359-6778 • FAX: (908) 359-1179

website: [www.indofinechemical.com](http://www.indofinechemical.com)

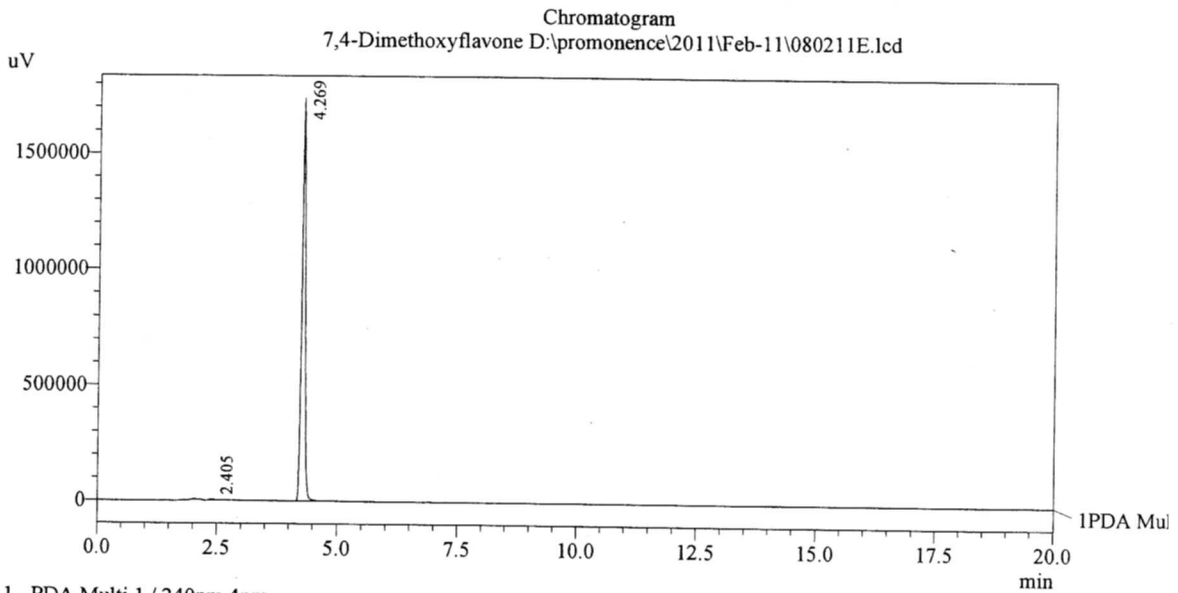
e-mail: [chemical@indofinechemical.com](mailto:chemical@indofinechemical.com)

## HPLC ANALYSIS

Date Acquired : 2/8/2011 4:39:22 PM  
Acquired by : Madhuri  
Sample Name : 7,4-Dimethoxyflavone  
Sample ID : 500 gm  
Injection Volume : 20 uL  
Data Filename : 080211E.lcd  
Method Filename : Linear Isocratic.M.lcm

Cat. No.: D-431  
Product name: 7,4'-Dimethoxyflavone  
Lot No.: 1101113

Description:  
Column : Phenomenex C-18, 250X4.6mm 5.0µm  
Flow : 1.000ML/min.  
Mobile Phase : A(20% of 0.05% TFA) B(80% of ACN)



1 PDA Multi 1 / 240nm 4nm

PeakTable

PDA Ch1 240nm 4nm

Peak#	Ret. Time	Area	Height	Area %
1	2.405	18465	4411	0.211
2	4.269	8747408	1739290	99.789
Total		8765873	1743702	100.000